

Introduction

Air transfer Grilles or Door grilles are typically used in doors and partitions to allow air flow to a space that is not directly served by a ducted source of supply air or a ducted outlet for return or exhaust air.

These Door / Wall Grilles offers the largest free area possible with a completely sight proof or light proof core.

The inverted - vee louver cross section not only blocks vision, but also provides stiffness. Being mounted in the lower portion of a door. A door grille is by nature subjected to knocks and bumps.

Application

- The door/wall Grille XNSA is suitable for transfer of air from one room into the other.
- The Grille can be either mounted to the wall or the door.
- The horizontal V shape vanes are not adjustable and are sight proof.

Product Features

- All grilles are provided with a seal on the back of the frame in order that the perimeter in contact is airtight.
- Free Area 60%

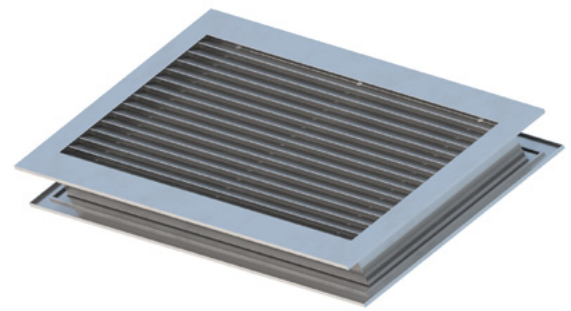
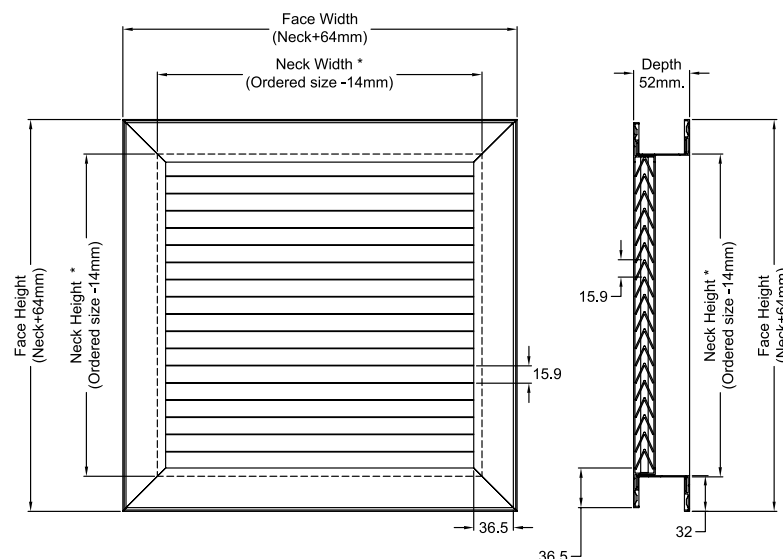
Construction

- Frame & Blades from high quality extruded Aluminium profiles – Alloy 6063-T6.
- Blades are inverted “V” horizontal cross section louvers arranged to overlap each other.
- The frame of the transfer Grille consists of two parts, one fixed, (holding the core) while the other part is of the sliding type which is then fixed to the other side of the partition (wall or door).
- Maximum size one piece construction is 600mm x 600mm (24" x 24").
- Powder coated to RAL 9010 finish or any other RAL colour.

Grille Options

- Custom or optional RAL colours (RAL codes to be provided)

Dimensions



Product Selection Check List

- Select Unit size (L x W) based on desired performance characteristics.
- Select outlet type by Model No.
- Select volume control accessories, if desired (OBD)
- Select RAL Colour