

Introduction

Model SPD, Nozzle Jet diffuser is a high capacity diffuser with jet type air flow specifically designed for spot heating or cooling in high ceiling applications.

The elegant design is best suited for architectural high end appearance and provides a modern alternative to any traditional diffusers while upholding the trusted performance characteristics.

Application

- Recommended for HVAC installations which require long or short throw pattern flexibility with trajectory control.
- Ideally suited for predictable directional control of conditioned air within large spaces such as malls, exhibit halls, sports arenas, industrial and manufacturing facilities, atrium areas, and large office building entrances.
- Small nozzle sizes provide shorter throws for smaller spaces
- Side wall, ceiling or duct mounted applications.
- Rapid temperature equalization eliminates stratification.

Product Features

- Nozzle assembly smoothly rotates in fixed mounting flange
- Adjustable core may be rotated through 360° and tilted up to maximum of 30° from mid position to produce a wide variation in air jet angles.
- Single element units are supplied as a standard
- A panel assembly of upto 2 nozzles permits multi-directional patterns from one location.
- Installation configurations include surface and end of round ducting
- Field adjustable pattern and direction – from the face of the outlet.
- Powder coated to RAL9010

Construction

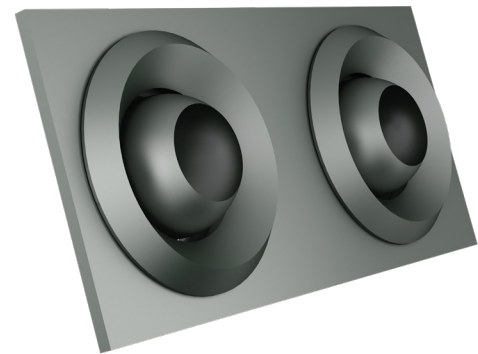
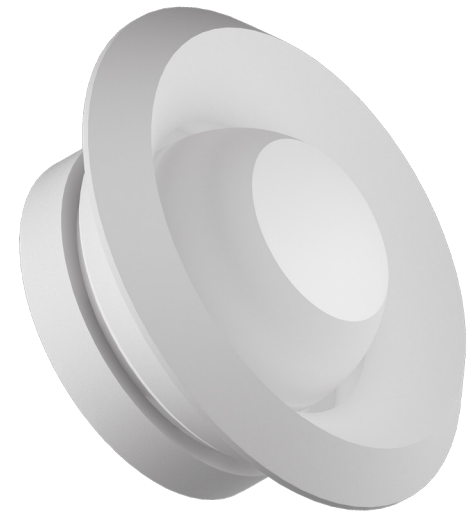
- Constructed from heavy gauge Aluminium.
- Flange-to-body gasket for a leak-proof seal

Options

- 1 or 2 elements per panel
- Any RAL colour upon request.

Dimensions

Nominal Dia (mm)	A (mm)	B (mm)	C (mm)	D (mm)	E (mm)
150	145	65	200	115	110
200	195	105	265	135	125
250	245	125	310	185	175
315	310	175	385	230	185
350	345	185	435	250	190
400	395	210	495	285	220
500	495	255	620	350	265
630	625	325	780	420	340



Product Selection Check List

- Select Inlet (Diameter) Size based on desired performance requirements.
- Select RAL Colour

