

MVD, MV, MKV, MKL, **2161C**, MXV Series

Float-type air vent valves

Technical Data Sheet





MKV

MICROVENT

Vertical automatic air vent valve. CW617N brass body and cover. Pre-sealed with O-ring. PN 10 bar. Maximum temperature: 110°C. Also suitable for water with additive (glycol up to 50%).

Type	Part No.	DN	Weight (g)
MKV	0251210	3/8"	140



MKVR

MICROVENT

MKV Series vertical automatic air vent valve with **pre-sealed** automatic shut-off valve.

Type	Part No.	DN	Weight (g)
MKVR	0251310	3/8"	165



MKL

MICROVENT

Lateral automatic air vent valve. CW617N brass body and cover. **Pre-sealed** with O-ring. PN 10 bar. Maximum temperature: 110°C. Also suitable for water with additive (glycol up to 50%).

Type	Part No.	DN	Weight (g)
MKL	0252210	3/8"	140



MKLR

MICROVENT

MKL Series lateral automatic air vent valve with **pre-sealed** automatic shut-off valve.

Type	Part No.	DN	Weight (g)
MKLR	0252310	3/8"	165



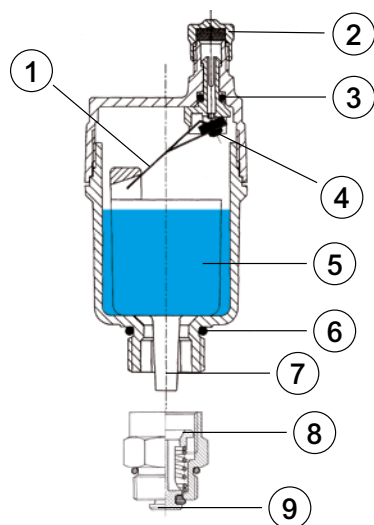
2161C

FLOATVENT

Vertical automatic air vent valve. **Pre-sealed with O-ring**. Suitable for installation on the head connections of coplanar manifolds. CW617N brass body. PN 10 bar. Maximum temperature: 110°C.

Type	Part No.	DN	Weight (g)
2161C	2161C38	3/8"	135
2161C	2161C12	1/2"	150
2161C	2161C34	3/4"	160
2161C	2161C1	1"	170

2161C



Parts

- | | |
|----------------------------------|-----------------------|
| 1) Air venting control mechanism | 5) Float |
| 2) Safety plug | 6) O-ring pre-sealing |
| 3) Vent O-ring | 7) Jet breaker |
| 4) Disc | 8) Check valve |
| | 9) Check valve disc |

Technical features

Minimum operating pressure	0.1 bar
Maximum operating pressure	10 bar
Maximum operating temperature	115°C
Usable fluids	water, including with glycol ≤ 50%

Features

Valve body	CW617N
Float	stabilised polypropylene
O-ring seal	EPDM
Disc	silicone rubber
Control mechanism	stainless steel
O-ring pre-sealing	EPDM
Retaining spring	stainless steel
Retaining disc	PA with fibreglass
Vacuum breaker	polyacetal
Connections	M 3/8" DIN-ISO 228/1

MAXIVENT

Due to its considerable size, the **MAXIVENT MXV Series** air vent valve is used for automatically venting air from large water distribution pipes (e.g. distribution manifolds in the central system, on risers) and in all cases where large quantities of air have to be removed from the system. **MAXIVENT** is also equipped with a manual air vent valve.

Technical features

Maximum discharge pressure	6 bar
Maximum operating pressure	12 bar
Minimum sealing pressure	0.1
Maximum operating temperature	115°C

Features

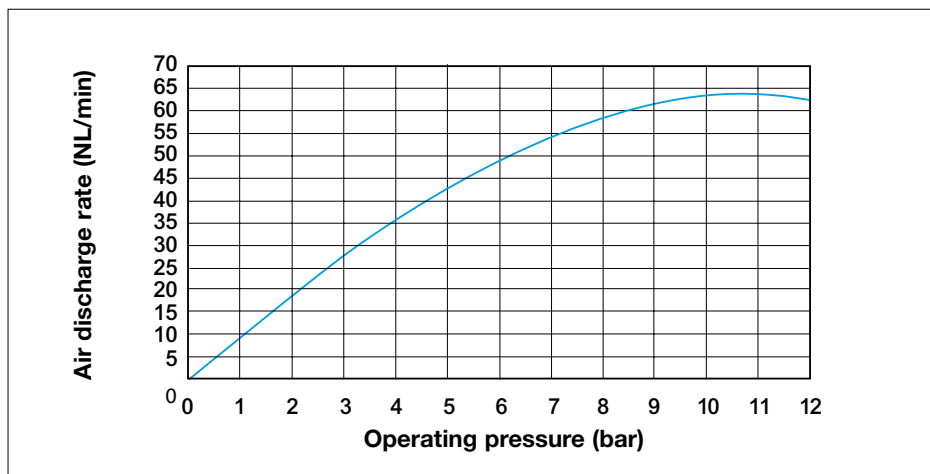
Body	GJS-400-15 cast iron entirely coated with epoxy resin
Cover	GJS-400-15 cast iron entirely coated with epoxy resin
Manual vent valve	chrome-plated brass
Lever	stainless steel
Disc	NBR
Float	high-density expanded polythene
Seals	NBR
Cap	brass
Inlet connection	F 3/4" - 1" - 1 1/4" DIN-ISO 228/1
Outlet connection	F 3/8" DIN-ISO 228/1 in brass

Application

These devices are used in all traditional heating systems (independent, central, radiant panel, etc.) to vent air during the filling phase and the air released into the water during the heating phase, which obstructs the normal circulation of the heat carrier fluid, particularly at the points where it circulates at low speed (heat emitters), thus reducing their thermal efficiency. Air vent valves allow the air to be discharged at the points of the system where it accumulates (distribution manifolds, tops of risers or directly in the boiler).

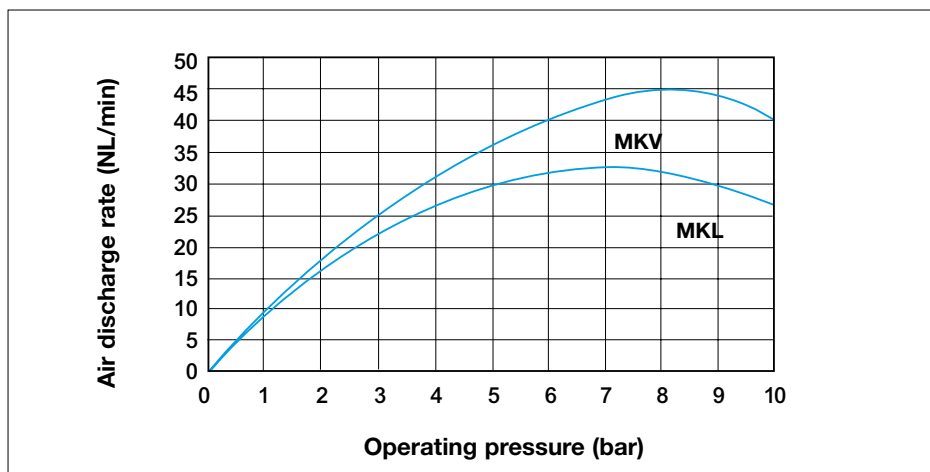
MINIVENT

Air discharge rate - Operating pressure



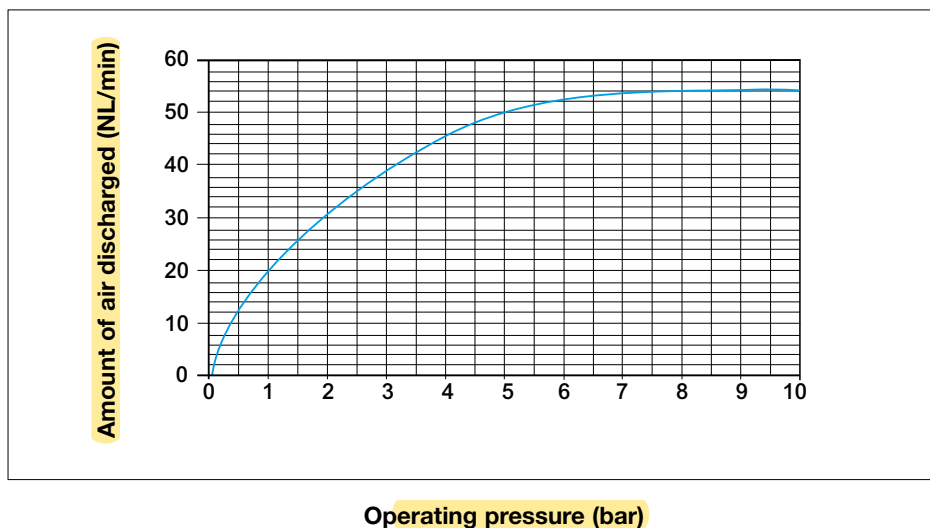
MICROVENT

Air discharge rate - Operating pressure

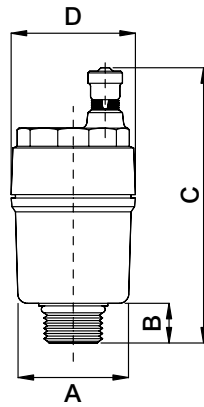


2161C

Discharge capacity

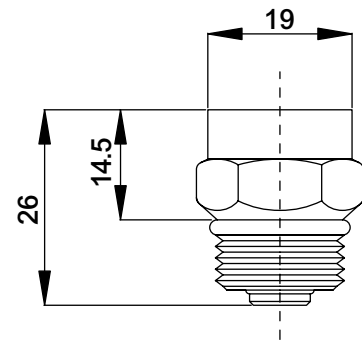


2161C

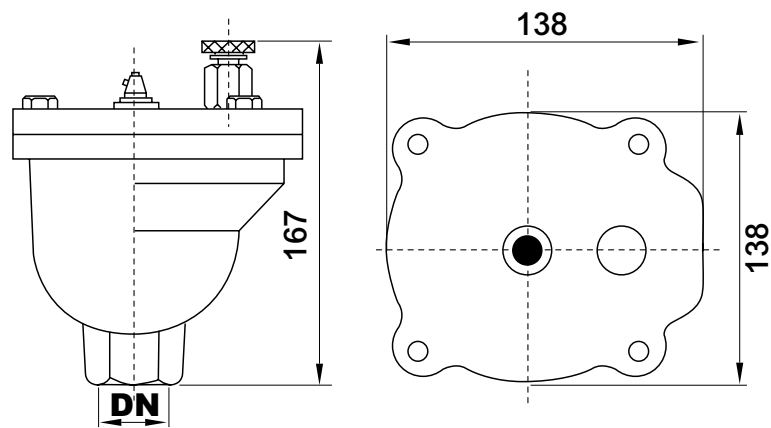


DN	A	B	C	D
3/8"	30	10	77	36
1/2"	30	10	77	36
3/4"	32	12	79	36
1"	37	12	79	36

2311C



MXV - 3/4" - 1" - 1.1/4"



Specification text

MVD Series

Automatic and manual air vent valve DUOVENT **MVD Series** – WATTS brand – with unscrewable inspection cover. CW617N brass body and cover. Corrosion-resistant polythene float switch. PN 12 bar. Max. operating pressure: 8 bar. Max. temperature: 115°C. Automatic discharge capacity at 3 bar: 17.9 NL/min. Manual discharge capacity at 3 bar: 139.5 NL/min. Also suitable for water with additive (glycol up to 50%).

MV Series

Automatic air vent valve MINIVENT **MV Series** – WATTS brand – with unscrewable inspection cover. CW617N brass body and cover. Corrosion-resistant polythene float switch. PN 12 bar. Max. temperature: 115°C. Also suitable for water with additive (glycol up to 50%)

MKV Series

Vertical automatic air vent valve MICROVENT **MKV Series** – WATTS brand. CW617N brass body and cover. Equipped with O-ring. PN 10 bar. Max. temperature: 110°C. Also suitable for water with additive (glycol up to 50%)

MKL Series

Lateral automatic air vent valve MICROVENT **MKL Series** – WATTS brand. CW617N brass body and cover. Equipped with O-ring. PN 10 bar. Max. temperature: 110°C. Also suitable for water with additive (glycol up to 50%)

2161C Series

Vertical automatic air vent valve FLOATVENT **2161C Series** – WATTS brand. CW617N brass body. Equipped with O-ring. Suitable for installation on the head connections of coplanar manifolds. PN 10 bar. Max. temperature: 110°C.

MXV Series

High-flow automatic air vent valve MAXIVENT **MXV Series** – WATTS brand. Equipped with manual vent valve. Cast iron body and cover with epoxy paint finish. PN 12 bar. Max. operating temperature: 115°C. 3/8" F air outlet connection.

The descriptions and photographs contained in this product specification sheet are supplied by way of information only and are not binding.

Watts Industries reserves the right to carry out any technical and design improvements to its products without prior notice. Warranty: All sales and contracts for sale are expressly conditioned on the buyer's assent to Watts terms and conditions found on its website at www.wattswater.eu. Watts hereby objects to any term, different from or additional to Watts terms, contained in any buyer communication in any form, unless agreed to in a writing signed by an officer of Watts.



Watts Industries Italia S.r.l.

Via Brenno, 21 • 20853 Biassono (MB) • Italy
Tel. +39 039 4986.1 • Fax +39 039 4986.222
infowattsitalia@wattswater.com • www.watts.com